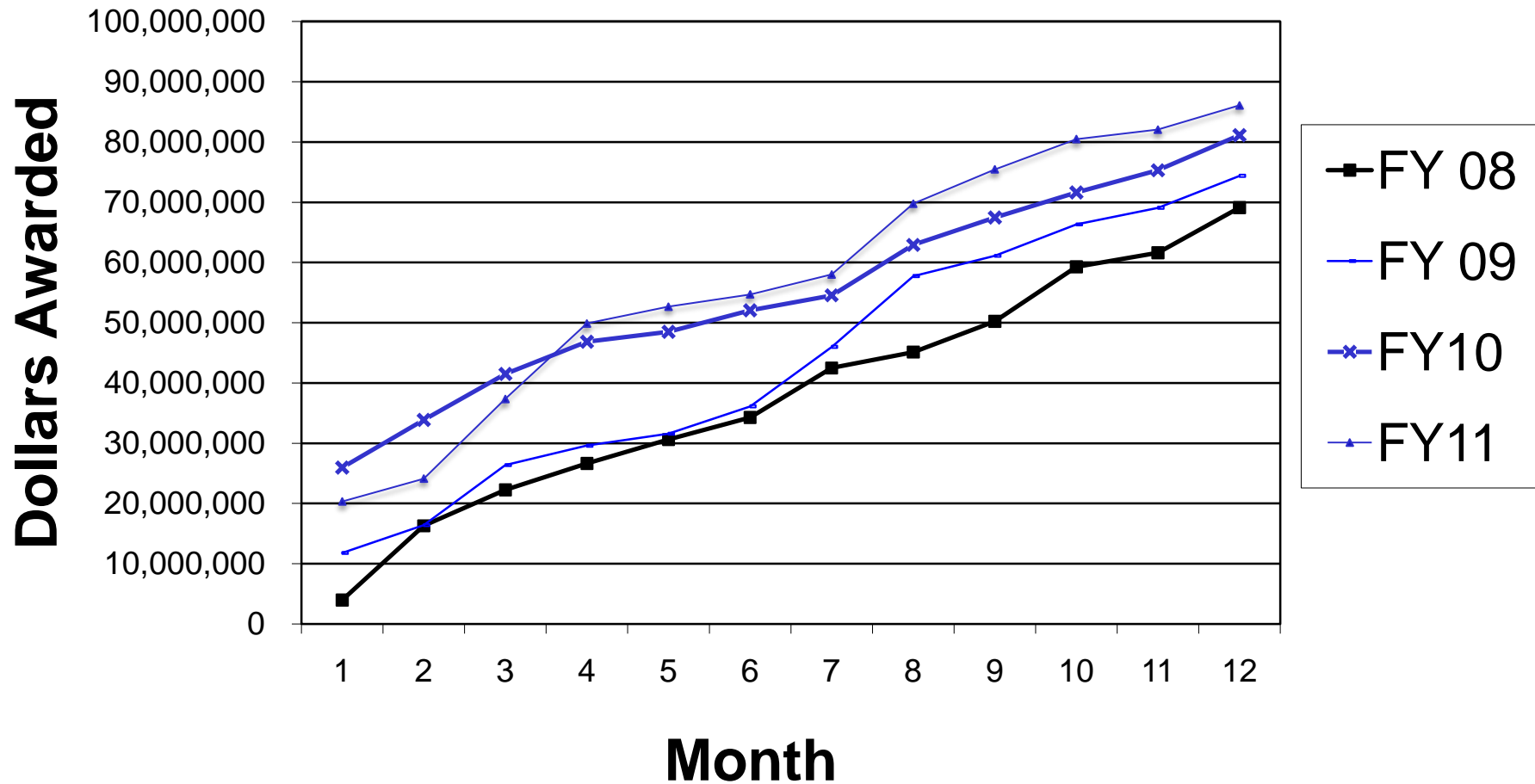


# WRIGHT STATE UNIVERSITY

## Cumulative Grant and Contract Awards Comparison with Previous Three Fiscal Years Excluding SSI Recovery Funds



Totals through June 30, 2011, excluding Federal Stimulus funding of  
State Share of Instructional (SSI) distribution.



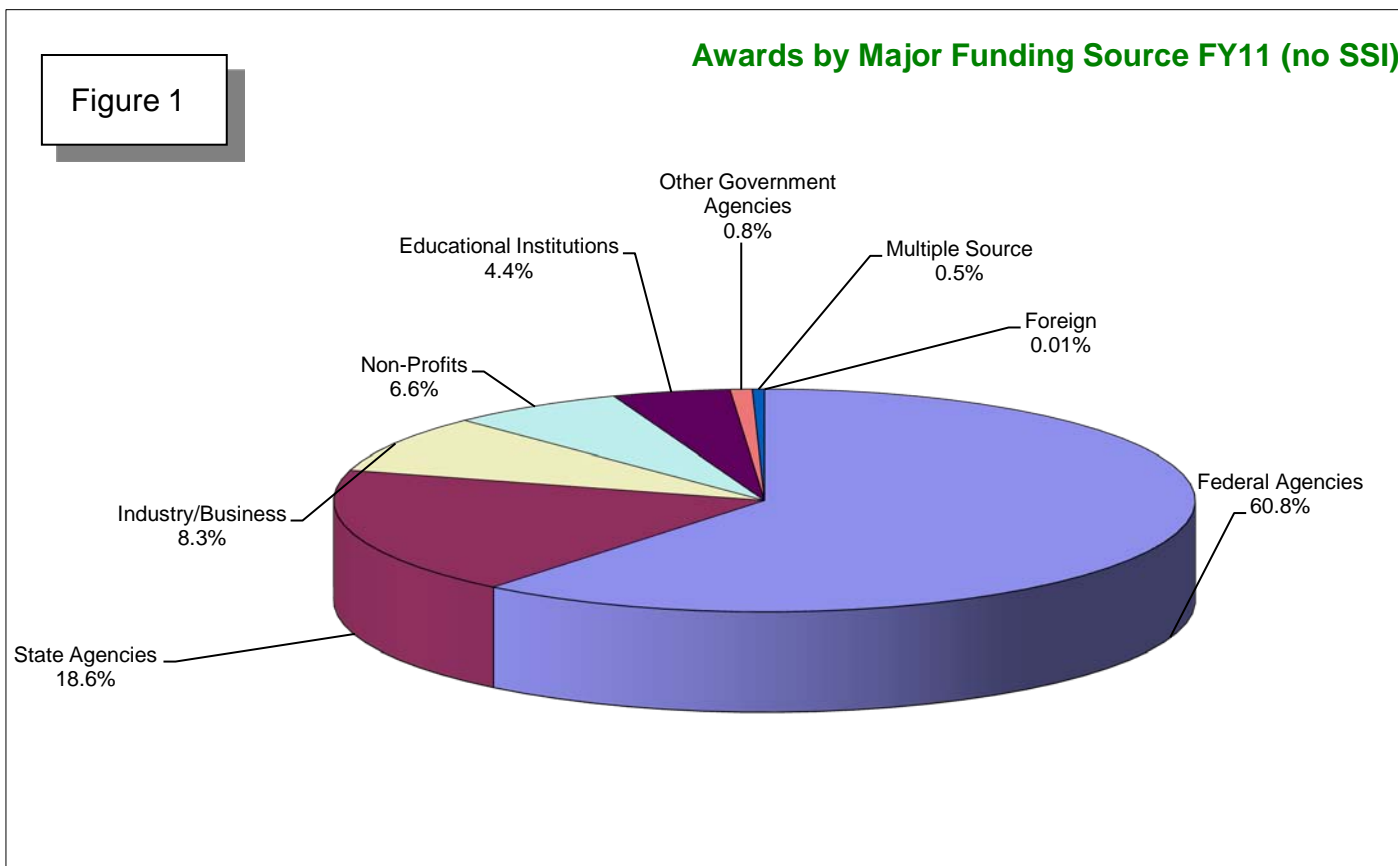
# Awards by Major Funding Source FY11 (no SSI)

**Table 1: Awards by Major Funding Source FY11 (no SSI)**

<b>Major Funding Source</b>	<b>Number of Awards</b>	<b>Amount Awarded</b>
Federal Agencies	150	\$52,275,975
State Agencies	79	\$15,974,855
Industry/Business	161	\$7,168,378
Non-Profits	86	\$5,653,220
Educational Institutions	67	\$3,798,881
Other Government Agencies	36	\$712,996
Multiple Source	18	\$390,339
Foreign Sponsors	3	\$111,000
<b>Total</b>	<b>600</b>	<b>\$86,085,644</b>



# Awards by Major Funding Source FY11 (no SSI)





# Awards by Campus Area FY11 (no SSI)

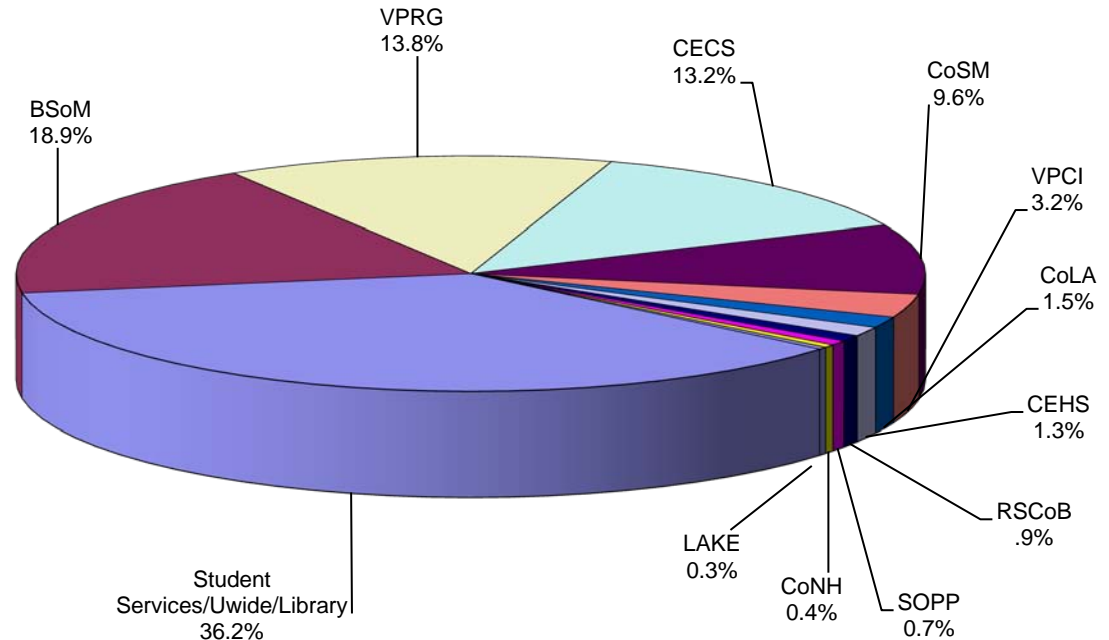
**Table 2: Awards by Campus Area FY11 (no SSI)**

<b>Campus Area</b>	<b>Number of Awards</b>	<b>Amount Awarded</b>
Student Services/Uwide/Library	35	\$31,202,553
Boonshoft School of Medicine	138	\$16,257,641
VP Research & Graduate Studies	53	\$11,853,578
College of Engineering & Computer Science	134	\$11,385,254
College of Science & Mathematics	115	\$8,248,270
VP Curriculum & Instruction	8	\$2,773,283
College of Liberal Arts	54	\$1,316,989
College of Education & Human Services	10	\$1,110,800
Raj Soin College of Business	14	\$737,576
School of Professional Psychology	25	\$560,891
College of Nursing & Health	11	\$360,406
Lake Campus	3	\$278,404
<b>Total</b>	<b>630</b>	<b>\$86,085,644</b>

# Awards by Campus Area FY11 (no SSI)

Figure 2

Awards by Campus Area FY11 (no SSI)





# Awards by Type of Activity FY11 (no SSI)

**Table 3: Awards by Type of Activity FY11 (no SSI)**

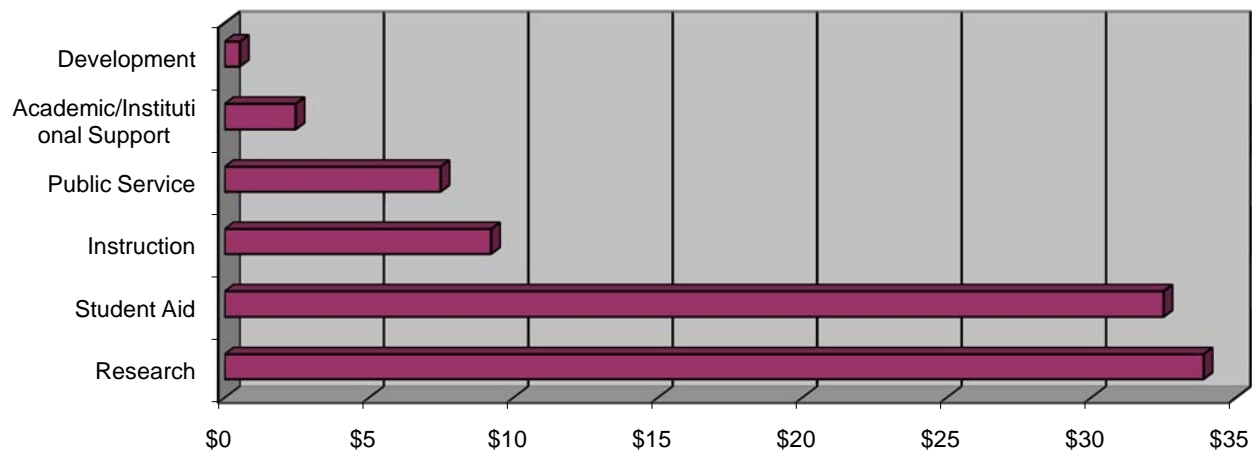
<b>Type of Activity</b>	<b>Number of Awards</b>	<b>Amount Awarded</b>
Research	363	\$33,893,242
Student Aid	45	\$32,505,883
Public Service	119	\$9,224,453
Academic/Institutional Support	26	\$7,476,901
Instruction	44	\$2,458,111
Development	3	\$527,055
<b>Total</b>	<b>600</b>	<b>\$86,085,644</b>



# Awards by Type of Activity FY11 (no SSI)

**Figure 3**

**Awards by Type of Activity FY11 (no SSI)**  
(in millions)





# 10 Years of Funding (no SSI)

**Table 4: Ten Years of Funding: Grant and Contract Awards FY02 to FY11 (no SSI)**

<b>Fiscal Year</b>	<b>Number of Awards</b>	<b>Amount Awarded</b>	<b>Increase/ Decrease Vs. Prev. Yr.</b>
2001-02	537	\$41,362,186	-15%
2002-03	554	\$46,255,284	12%
2003-04	570	\$50,462,293	9%
2004-05	573	\$62,655,115	24%
2005-06	558	\$64,378,342	3%
2006-07	576	\$71,377,270	11%
2007-08	580	\$69,119,080	-3%
2008-09	593	\$74,383,725	8%
2009-10	590	\$81,123,292	9%
2010-11	600	\$86,085,644	6%



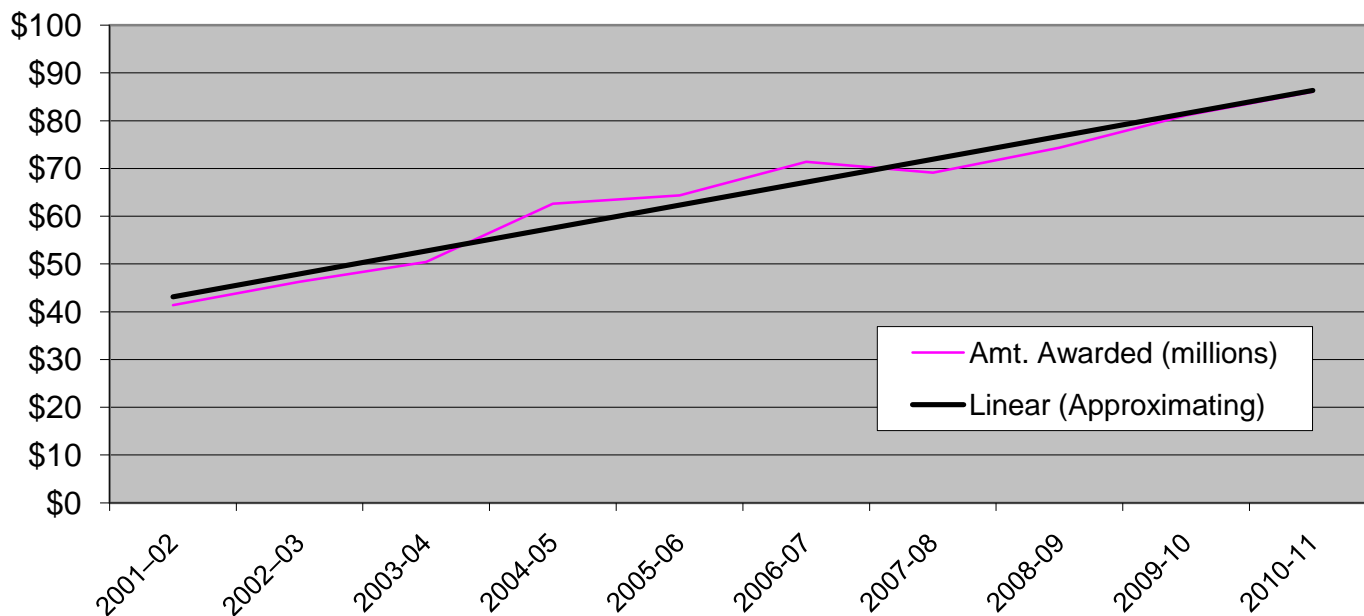


**WRIGHT STATE**  
UNIVERSITY

# 10 Year Funding Trend (no SSI)

Figure 4

## 10 Year Trend FY02 to FY11 (no SSI) (in millions)





# Awards by Type and Campus Area FY11 (no SSI)

**Table 5: Awards by Type and Campus Area FY11 (no SSI)**

<b>College/ School</b>	<b>Research</b>	<b>Instruction</b>	<b>Pub. Serv.</b>	<b>Other</b>	<b>Total</b>
U-wide/Student Serv/Library	\$0	\$0	\$140,359	\$31,062,194	\$31,202,553
Boonshoft School of Medicine	\$11,653,767	\$640,472	\$3,544,735	\$418,667	\$16,257,641
Vice President Research & Grad Studies	\$4,232,351	\$0	\$1,277,842	\$6,343,385	\$11,853,578
College of Engineering & Comp. Sci.	\$10,322,454	\$329,652	\$65,465	\$667,683	\$11,385,254
College of Science & Math	\$6,694,117	\$899,830	\$294,665	\$359,658	\$8,248,270
Vice President Curr. & Instruction	\$250,000	\$0	\$1,411,855	\$1,111,428	\$2,773,283
College of Liberal Arts	\$60,000	\$138,750	\$1,103,541	\$14,698	\$1,316,989
College of Education & Human Services	\$266,381	\$171,710	\$556,757	\$115,952	\$1,110,800
Raj Soin College of Business	\$287,040	\$0	\$315,557	\$134,978	\$737,575
School of Professional Psychology	\$87,000	\$250,697	\$188,107	\$35,087	\$560,891
College of Nursing and Health	\$40,132	\$0	\$47,166	\$273,108	\$360,406
Lake Campus	\$0	\$0	\$0	\$278,404	\$278,404
<b>TOTAL</b>	<b>\$33,893,242</b>	<b>\$2,431,111</b>	<b>\$8,946,049</b>	<b>\$40,815,242</b>	<b>\$86,085,644</b>



# Awards by Federal Agency and Campus Area FY11

**Table 6: Awards by Federal Agency and Campus Area FY11**

College/ School	EDUC	DHHS	DoD	NSF	NASA	DOT/FAA	Other Fed	Federal Total
Student Services/Uwide/Library	\$30,646,207	\$0	\$0	\$0	\$0	\$0	\$141,694	\$30,787,901
Boonshoft School of Medicine	\$35,000	\$11,100,460	\$209,763	\$0	\$443,472	\$0	\$10,500	\$11,799,195
College of Science & Mathematics	\$0	\$1,038,659	\$1,298,589	\$2,211,267	\$275,532	\$0	\$140,753	\$4,964,800
College of Engineering & Computer Science	\$0	\$373,638	\$2,028,328	\$1,127,834	\$0	\$632,086	\$79,932	\$4,241,818
VP Curriculum & Instruction	\$250,000	\$0	\$0	\$0	\$0	\$0	\$0	\$250,000
College of Education and Human Services	\$100,000	\$0	\$0	\$0	\$0	\$0	\$0	\$100,000
College of Nursing & Health	\$0	\$93,108	\$0	\$0	\$0	\$0	\$2,166	\$95,274
School of Professional Psychology	\$0	\$30,587	\$0	\$0	\$0	\$0	\$0	\$30,587
College of Liberal Arts	\$0	\$0	\$0	\$0	\$0	\$0	\$6,400	\$6,400
VP Research & Graduate Studies	\$0	\$0	\$0	\$0	\$0	\$0	\$0	\$0
Raj Sooin College of Business	\$0	\$0	\$0	\$0	\$0	\$0	\$0	\$0
Lake Campus	\$0	\$0	\$0	\$0	\$0	\$0	\$0	\$0
<b>TOTAL</b>	<b>\$31,031,207</b>	<b>\$12,636,452</b>	<b>\$3,536,680</b>	<b>\$3,339,101</b>	<b>\$719,004</b>	<b>\$632,086</b>	<b>\$381,445</b>	<b>\$52,275,975</b>